



SPRING

2012

Classes and Workshops

Updated February 10, 2012

Lexington Arts and Crafts Society
130 Waltham Street - Lexington, MA 02421
781-862-9696 www.lacsma.org

The Lexington Arts and Crafts Society is a non-profit 501(c)(3) regional education center dedicated to the preservation and promotion of excellence in both the traditional and contemporary arts and crafts.

ABOUT THE SOCIETY

The Lexington Arts and Crafts Society was founded in 1935 when a group of artists and craftspersons met and drew up a constitution with the objective "to foster in the community a more active interest in the arts and crafts and to encourage higher artistic standards in the arts and handicrafts". In 1953, the Society was incorporated as a non-profit organization. For nearly twenty years after its founding, the Society carried on its activities in members' homes and in various public buildings in Lexington. Then, in 1953, the Society broke ground for its own building at 130 Waltham Street. Designed by a fellow member, Marjorie Pierce, this art center was built entirely through the efforts of Society members. The building was dedicated the next year, and the first exhibit and fair were held. Additions to the building were constructed in 1965 and 1973.

There are four classifications of membership in the Lexington Arts and Crafts Society: Active Guild, Society Sustaining, Junior and Corporate. Most members are Active, producing artists and craftspersons belonging to a guild. Requirements for guild membership vary with each guild. Society Sustaining members are persons who have an interest in the arts and crafts and a desire to participate in the Society, though not a guild. Junior Members (13-18 years of age) are persons who are interested in participating in classes and workshops. Corporate Members are corporations, companies and businesses who wish to be supportive of the aims, goals and objectives of the Society and whose membership donations recognize the Society as a service to the community.

The Society is currently composed of ten guilds: Basketry, Ceramics, Decorative Arts, Metalworkers, Needle Arts, Painters, Photography, Polymer Clay, Weavers and Woodworkers and a group of Sustaining Members.

Each guild has its own schedule of meetings, workshops, classes and seminars, as well as its own specialized tools and equipment. Artists and craftspersons are thus able to work in a community of artisans with similar interests, sharing ideas and expertise. Our building has a large painters studio, a ceramic studio with kilns, well-equipped woodworkers and metalworkers shops, and a weavers room with numerous looms. The Society's Minnie Seaver Library/Guild Libraries contain an impressive selection of arts and crafts books which are available to members.

A variety of exciting exhibits are mounted in our Parsons Gallery year-round by our own guilds, as well as by invited guest artists. Guild members have an opportunity to exhibit or sell their work at these gallery showings, which are open free of charge to the public.

Numerous classes and workshops, days, evenings and weekends, are offered to members and the general public at reasonable fees. The public is invited to monthly reception, which are usually held the first or second Sunday of the month, and often include a speaker/demonstration or entertainment.

Scholarships from an Art Scholarship Fund are available to graduating seniors from Lexington High School. In addition, our Scholarship Committee provides continuing support to scholarship recipients in furthering their art careers at accredited art institutions.

The Society has three annual sales, the October Annual Fundraising Fair, December Holiday Marketplace and July/August Artisans Market, at which the public can purchase quality arts and crafts.

Annual Society Dues: Active Guild Member \$150; Society Sustaining Member \$100. Guild Dues are additional. An Orientation Meeting is required prior to becoming a member. For more information regarding membership, please contact the Office at 130 Waltham Street, Lexington, MA 02421, or telephone (781) 862-9696.

Member of the North American Reciprocal Museums (NARM)

Professional Development Point (PDP) Provider

The Lexington Arts and Crafts Society is approved as a Professional Development Point (PDP) Provider by the Massachusetts Department of Elementary and Secondary Education.

Teachers participating in classes and workshops are eligible to receive PDP's based on hours of attendance:
One (1) point per hour for ten hours completed of class/workshop time (following a written reflection and/or assessment by the registered teacher).

PDP Certificates are awarded at the end of the term.

Add: \$10.00 per course for PDP Credits

EDUCATION POLICIES

-CANCELLATIONS - The Lexington Arts and Crafts Society reserves the right to cancel any under-enrolled course, to restrict registration, to change instructors if necessary or make schedule changes. Every effort will be made to notify registered students. Classes cancelled due to low enrollment will be refunded.

-TUITION REFUNDS - Tuition and fees cannot be refunded unless we are notified at least one week prior to the start of your class, but we are happy to work with you to find another class to fit your schedule. Non-refundable administrative and registration fees are included in the tuition.

-EMAIL CONFIRMATION -

Confirmation of your class/workshop will not be made. You will be notified only if you are not in a class due to full enrollment or class cancellation. Otherwise, plan to attend your class at the first meeting.

-INCLEMENT WEATHER - In the event of inclement weather please call 781-862-9696 for a recorded message. Classes postponed due to weather or other factors beyond Lexington Arts and Crafts Society's control will be rescheduled if possible. Make-up classes will be held at the end of the term unless otherwise notified.

-MATERIALS LISTS AND FEES - Some classes require that participants pay an additional fee to cover the cost of materials provided by the artist or require students to bring their own supplies and safety equipment. Please consult the course description, materials lists are sent via email to enrolled students. If you do not have an email address please call 781-862-9696. Some materials fees are paid directly to the instructor at the first class. Materials for most classes are included in tuition.

Questions? Call 781-862-9696
or email lacs.lexington@verizon.net.

-ACCESS/MEDICAL CONDITIONS - Lexington Arts and Crafts Society welcomes participants of all abilities. We are wheelchair accessible and offer handicapped parking close to our Education Entrance. If you or your child has any special needs or medical conditions that we need to be aware of, please notify us in advance so we can best accommodate you.

-PROFESSIONAL DEVELOPMENT POINTS- Professional Development Points (PDPs) are available for teachers who complete studio/custom classes/ workshops. If you wish to take a course for PDPs, please indicate this at the time of registration. There is an additional \$10 fee.

-PHOTOGRAPHY - Lexington Arts and Crafts Society photographs its classes for promotional purposes. Occasionally, local media will also document special workshops and events. Registration implies your compliance with the use of your image in our publicity materials. If you do not wish for yourself or your child to be photographed, please notify us in writing.

-DISCOUNTS - Members of the Lexington Arts and Crafts Society receive discounts on classes and workshops. If you are not yet a member and wish to join, please call 781-862-9696.

-LATE REGISTRATION FEE - \$15 - Registrations must be received at least one week prior to the start of class or a late fee of \$15 will be assessed.

Please register promptly as classes may be limited in size. You will be notified only if a class is full or cancelled.

NARM members pay at Society Member rates.

INSIDE THIS BROCHURE

	<u>Page</u>
<u>CERAMICS</u>	
Ceramics.....Adults.....	1
Teen PotteryTeens.....	1
Ceramics Workshops.....Adults.....	2-2b
<u>DECORATIVE ARTS</u>	
Decorative Painting.....Adults.....	3
Spring Bouquet Plate.....Adults.....	3
Art Party Workshop Series.....Adults.....	3
<u>DRAWING</u>Adults & Teens.....	4
<u>METALSMITHING</u>Adults.....	5
<u>MIXED MEDIA</u>Grades 4-6.....	9
<u>MIXED MEDIA</u>Adults.....	2b
<u>PAINTING</u>	
Members Open Studio.....	10
Painting Workshops.....	6
Painting Classes.....	7-9
<u>WOODWORKING</u>	
Bird Carving.....Adults.....	11
Beginning Woodworking.....Adults.....	11
<u>WORKSHOPS</u>	
Sculpture.....Adults and Teens.....	6
Society Membership Information.....	12
REGISTRATION FORM	Last Page

CERAMICS



ADULT CERAMICS

by Cora Pucci

(Beginners to Intermediate)

Wednesdays 6:00-9:00pm
(Beginners to Intermediate)

March 8—April 25

Wednesdays 6:00-9:00pm
8 Sessions Member \$240
Non-Member \$280

Fee includes supplies and firing.

Focus is on a combination of hand-building and wheel. Excellent facilities and individual instruction by a professional studio potter.

The class runs one session into the next throughout the year. Please inquire about openings, Cora will take names for a waiting list. Call Cora at 781-648-9453.

Cora is a professional studio potter. She has exhibited both locally and abroad. Cora has taught for many years at MIT Student Art Center, DeCordova Museum School children's summer program, The Cambridge Center for Adult Ed, and in her own studio at the Old Schwamb Mill in Arlington, MA.



TEEN POTTERY

by Lynne Fisher

(Beginners-Intermediate)

(Junior Membership is required)

Thursdays 6:00-8:30pm
Begins March 22
No class 1 day TBD

8 Sessions Class Fee: \$210

Fee includes clay, glazes, firing.

Focus on both wheel and hand- built techniques, decorating and glazing high fire stoneware.

The class runs one session into the next throughout the year. Please inquire about openings, Lynne will take names for a waiting list.

Contact the Society Office regarding openings and information about becoming a Junior Member at 781-862-9696.

Lynne Fisher is a professional potter; juried shows; professional teacher.



CERAMICS

by Bet Lee

Saturdays 8:30-11:30am
April 14

8 Sessions Member \$240
Non-Member \$280

Fee includes supplies and firing.

Maximum # of Students: 8

Students will focus on quality functional ware and creative sculptural pieces using throwing and hand-building techniques. We will use a variety of finishing surface treatments. Tools needed: cut-off wire, sponge, basic wood tools, pin tool and towel.

Tools may be purchased at Playtime in Arlington, Portland Pottery in Braintree, and on-line.

Bet has worked with clay for over 34 years. She has worked with wood, metal, glass film and painting. Bet holds a BFA from Massachusetts College of Art.

The class runs one session into the next throughout the year. Please inquire about openings. A waiting list will be taken. Call Bet at 617-216-0644.

CERAMICS WORKSHOPS

CERAMICS WORKSHOP

Tea Bowls and The Japanese Tea Ceremony
By Steve Murphy



Friday 7-8:30pm Saturday 10am—5 pm
March 23 & 24

Class Fee: Members \$75 Non-Members \$95

Steve Murphy will present a lecture and powerpoint for 1 1/2 hours on Friday night and a demonstration for 5 hours on Saturday. The workshop on Saturday will be a demonstration, starting at 10 a.m. and running until 4, with an hour for lunch. The demonstration will include throwing winter, fall, and summer bowls, as well as trimming these bowls with steel and wood knives. Decorative effects with slip and knife-work will also be demonstrated. Also covered will be water containers, flower vases, sake sets, and, if time allows, larger vases and bowls.

Steve is a potter/ sculptor working in primarily clay. His Arts education began with a BFA in Design from UMass Dartmouth and continued with an intensive study of clay in Nagano Japan. Now in his 20th year as a studio artist his specialties are wood-fired stoneware and most recently cast bronze.

Steve spent three years in the small town of Obuse in Japan's Central Highlands as an English teacher in the local Junior High School and as a student of Keiichroh Sato, a potter/sculptor. His abstract sculptures are based on biological sources, the "Radiolarians" are microscopic sea creatures and the "Fossil" series relate to dinosaur bones. His covered vessels are designed to hold treasures of any kind—spices to diamonds! They are thrown as single works, then cut into two and trimmed. His bowls and platters, sake cups and bottles and other pots are designed to be used! They are food and dishwasher safe. Steve thinks about how his work will be used. The food delineates the design.

Steve's work has been exhibited at many galleries and museums and I teach adults and children at The DeCordova Sculpture Park and Museum.

CERAMICS WORKSHOP

Making Useful Pots
by Doug Casebeer



Saturday, May 5 10am—5 pm

Class Fee: Members \$65 Non Members \$80

"In this full-day workshop (3 hours in the morning, 3 in the afternoon), I will demonstrate my pottery making techniques. I will throw and hand build pitchers, teapots and vases. I will make lids, spouts, handles, and trim pots. My stoneware pots are intended for daily use and enjoyment. With over 30 years of working in clay and developing projects worldwide, I will share with you this incredible journey through the making of pottery.

Doug Casebeer is the Artistic Director for Ceramics and Sculpture at the Anderson Ranch Arts Center. Doug is also Chair of the Artist in Residency Program. He is in his 28th year of running workshops at the Ranch. He received his MFA in ceramics from Alfred University and his BFA from Wichita State University. Doug teaches, lectures, builds kilns and exhibits his artwork worldwide. He has served as pottery consultant to the United Nations and the German government. Doug's service to the field has involved outreach in rural Jamaican schools, technical support and assistance for Nepali potters, and advising art centers in Chile and Hawaii. His artwork is in collections around the world, including a permanent installation in 2007 at the Yingge Museum of Ceramics in Taiwan. In 2009 Doug was elected to the International Academy of Ceramics in Geneva, Switzerland and was a featured artist at the Chinese Academy of Fine Art in Beijing. Doug is also a juror for the State of Clay.

CERAMICS WORKSHOPS

PUT A LID ON IT

Making containers with lids
(Beginners to Intermediate)

By Helen Fitts

Fridays 6-9pm April 13, 20, 27 & May 11

4 Sessions Class Fee: Members \$120
Non-Members \$150

Fee includes supplies and firing

9 Student Maximum

Throw two different styles of lids for small covered containers. Make the same styles of lids for larger containers, as casserole dishes.

Class 1 Throw two small containers, each with a different style lid (inside lip and overhanging lid).

Class 2 Trim the pieces made in the first class. Throw larger pieces, as bowls or casseroles with lids of two different styles.

Class 3 Trim the pieces made in the second class. Add handles, knobs.

Allow two weeks for drying and bisquing.

Class 4 Glaze the pieces.

Helen is an experienced studio potter with a focus on functional pottery.



MIXED MEDIA

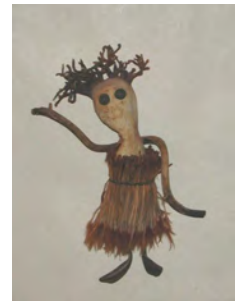
MIXED MEDIA: CREATING WITH NATURAL & FOUND OBJECTS

by Judith Cooper



Rocking the Boat by Judith Cooper

My artwork is created from an exploration into my psychic depths. I open myself as a vehicle through which energies and visions can flow into imagery. A deep reverence for life and the natural laws of the universe are an integral part of my spiritual center. This connection allows me greater intimacy with my core of existence and furthers my understanding of my place in the cosmos, including that moment of wonder where "magic" takes place and I am privileged to be its witness.



Seaweed Doll Totem by Judith Cooper

Thursdays 3:30-6:00pm March 22 – April 26

6 Sessions Class Fee: Members: \$190
Non members: \$210

10 Student Maximum

We will look at different ways that natural and found materials can be used to make creations that express ideas in various forms (such as totems, sculptures and assemblages). This course will invite you to bring the creative process into your life by gathering and utilizing materials you find around you.

Materials: Materials from nature (seed pods, grasses, leaves, sticks, vines, etc.) and found materials (rusted scrap metal, toy parts, etc.), as well as miscellaneous everyday objects,

The first class will be held at the instructor's studio

(9 Jean Road, Lexington) to show students a variety of natural and found materials that can be used to create with, provide a model for materials storage and show examples of finished work.

EXPLORE THE POSSIBILITIES OF DECORATIVE PAINTING

by Anne Hunter



Wednesdays 6:30-9:30pm
4 Sessions
April 11– May 2

Members \$125
Non-Members \$145
Minimum 6 students

Includes Materials Fee of \$45 for paints, mediums and surfaces

In our four week class you will learn the basics of decorating painting; how to prepare backgrounds, simple composition, and how to paint shadows and highlights to get that 3D look. Discover how easy it is to paint your own personal accents, from a canvas for wall décor to painted objects that are your own one of a kind art work.

Decorative painting is an art form that gives you the freedom to paint on “anything”. This freedom opens the door to possibilities that are endless. With a little paint and lots of imagination you can have your own interior designer look at a fraction of the cost.

Give it a try; it’s personally stimulating, perfect for re-purposing, easy to learn and very affordable.

*additional supplies and brushes are required. This is for students to bring. A complete supplies list will be provided upon registration. Brushes may be purchased from the instructor.

Anne Hunter is the owner of The Creative Touch, a Decorative Arts Studio, where she teaches decorative painting classes and creates her own line of decorative painting packets and books; and writes article for national magazines. She teaches in her studio and travels throughout the United States to teach at conferences and chapter meeting of the National Society of Decorative Painters. Anne has designed and marketed over 75 pattern packets, authored eight Decorative painting books, developed two web based lessons and has been published in leading magazines in the US and in Japan. Anne is an active member of the National Society of Decorative Painters.

Anne can be reached at 508-485-9306; email creativetouch@earthlink.net or visit her website www.thecreativetouch.com

ART PARTY WORKSHOP SERIES Register for 1, 2 or all 3!

By Anne Hunter

Fridays 6-9 pm

April 27 “Starry Night”
May 11 “Sunflower”
June 1, “Peasant Woman”

Members: \$65
Non Members: \$80
Minimum 6 students

Includes Materials Fee of \$30 for paints, mediums and surfaces

Workshop Description: Re-create a master piece in one night. Step by step instructions given so that even the novice can go home with a finished masterpiece. 16”X20” Canvas, paints and mediums included*.

*additional supplies and brushes are required. This is for students to bring. A complete supplies list will be provided upon registration.



SPRING BOUQUET PLATE

by Mary Svenson

Saturday , April 21 9am-5pm
One Day Workshop

Intermediate

Members \$110
Non-Members \$130

Includes Materials Fee of \$37 for prepped plate, paints, and pattern

Paint a metal plate of spring floral with traditional strokes and antiquing techniques. Would make a lovely Mother’s Day gift!

Mary Svenson, a new member of the LACS Decorative Arts Guild, has been involved in decorative painting since 1982. In 1983 she joined the Society of Decorative Painters (SDP) and has earned a CDA (Certified Decorative Artist), and Master Stroke and Master Floral categories of the MDA (Master Decorative Artist).

Mary teaches regularly at her studio and has taught at numerous chapters, SDP conferences, New England Traditions, and Heart of Ohio Conventions. In more recent years she has been designing and marketing pattern packets in both acrylics and oils. In 2000 she was the design artist for New England Traditions (NET) and completed her first book, “A New England Tole Sampler”. In 2004 she was bestowed the honor of having an original Christmas ornament hanging on the White House Christmas Tree in the Blue Room. In 2009, her design was chosen for the SDP membership card.



DRAWING

LEARNING TO SEE/LEARNING TO DRAW

by Judith Cooper

Adults

Fridays 1:00-3:30pm

March 23 — May 18 No Class May 11

8 Sessions Class Fee: Members: \$180
Non members: \$220

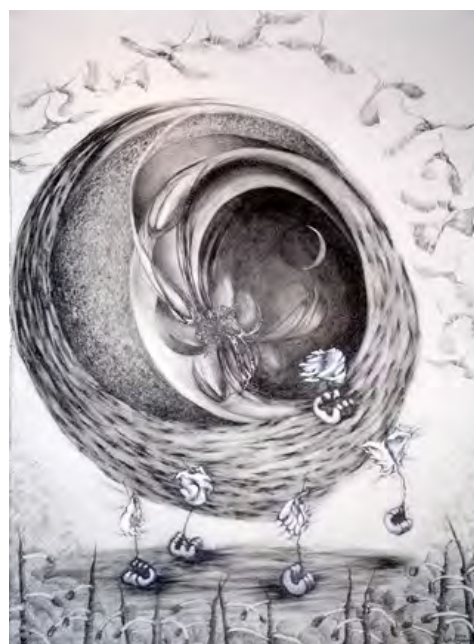
Teens

Tues 6:00-8:30pm

March 6—May 15

No Class Feb. 21

8 Sessions Class Fee: Members: \$160
*Junior Membership required



Transitional Time, graphite drawing, Judith Cooper; Drawing prize winner at Concord Arts Association

Learning how to actually SEE what you are looking at is the key to being able to put it down on paper. *Drawing on the Right Side of the Brain*, by Betty Edwards will be used as a foundation for this course. Contours/edges, negative/positive space, composition, perspective and shading techniques will be covered.

Material List will be sent out to students.

4 – 10 students

My artwork is created from an exploration into my psychic depths. I open myself as a vehicle through which energies and visions can flow into imagery. A deep reverence for life and the natural laws of the universe are an integral part of my spiritual center. This connection allows me greater intimacy with my core of existence and furthers my understanding of my place in the cosmos, including that moment of wonder where "magic" takes place and I am privileged to be its witness.

METALWORKERS CLASSES



INTRO TO JEWELRY AND SILVERSMITHING by Liz Check

Thursdays 6:30-9:30pm (Beginner)

March 22- May 24

10 Sessions Class Fee (based on 10 students)

Metalworkers Guild Member	\$130
Society Member	\$190 *
Non-Member	\$230 *
* includes lab and administrative fees	

Beginning students will be introduced to metalsmithing techniques including sawing, filing, hammering, forming, sanding, surface embellishment, soldering, chain-making, and polishing. Demonstrations will be provided for all techniques and for proper use of tools including flexible shaft, rolling mill and buffing machine. Instructor will assist students in project development to incorporate techniques learned.

CONTINUING JEWELRY AND SILVERSMITHING by Liz Check

Mondays 6:30-9:30pm (Beginner & Continuing)

March 19- May 21

10 Sessions Class Fee (based on 10 students)

Metalworkers Guild Member	\$130
Society Member	\$190 *
Non-Member	\$230 *
* includes lab and administrative fees	

Intermediate students will be instructed in improving craftsmanship in metalsmithing techniques including sawing, filing, hammering, forming, sanding, surface embellishment, soldering, chain-making, bezel setting, etching, keum-boo, finishing and polishing. Demonstrations will be provided for all techniques and for proper use of tools including flexible shaft, rolling mill and buffing machine. Instructor will assist students in project development to incorporate techniques learned.

METALSMITHING

By Joy Raskin

Adults (Intermediate to Advanced)



Mondays 1-4pm

March 19-June 5,

No Class April 30, May 7 and May 20

> **Tuesdays 6:30- 9:30pm**

March 20- June 5,

No Class May 1 and May 8

> **Thursdays 10:00am -2:30pm** **March 29- June 14,**

No Class April 29, May 3 and May 10

> **Mon. Afternoon and Tues. Eve (10 classes)**

Thursdays: (10 classes)

>	Guild member:	\$130
>	Society member:	\$190 *
>	Non-Member:	\$230 *

>	Guild member:	\$170
>	Society Member:	\$230 *
>	Non-Member:	\$270 *

*** includes lab and administrative fees**

> Metalsmithing Class - this class is for students who wish to continue furthering their metalsmithing skills. We will cover intermediate to advanced stone settings such as tube bezels, flush setting, prong setting and making your own prong settings.

Finishing techniques to get a better finish will be covered, and custom-made findings will also be covered. Some metalsmithing techniques such as foldforming, spoonmaking and forging will be covered as well. Last but not least, more soldering practice will be encouraged.

Joy Raskin has been teaching jewelry making, metalsmithing, Wireweaving and other metal techniques at craft programs throughout New England for over 15 years.

> For information about Joy, visit her website at www.joyraskin.com

PAINTERS WORKSHOP

WITH WATERCOLOR/PEN AND INK WORKSHOP

By Emily Passman

Sunday June 3
10am—3 pm

Member \$55
Non-Member \$70



Whether you're traveling, sitting quietly under a tree, or on a bench near a crowded café, the art of pen and ink with watercolor is a great way to slow down, record an experience or practice being in the present. When you sketch/paint what you see, your experience of it is heightened. A sketchbook is a great journal. Using a good quality book, the combination of pen and ink and watercolor is so satisfying. Drawing in groups is also a nice social time. I will teach different drawing techniques, quick tips for measuring, and improving perspective. If the weather permits, we'll draw/sketch and paint outside!

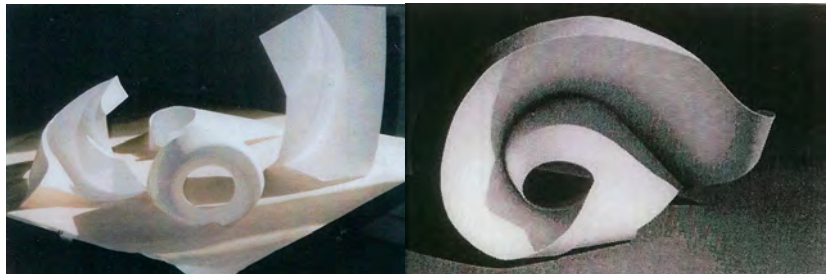
Materials list will be provided to registrants upon request.

Emily worked as a graphic designer for years before devoting herself to painting and teaching full time. She has a Master's Degree in Education from Boston University and is a member of the Depot Square Artists.

SCULPTURE WORKSHOP

EXPLORATIONS IN THREE DIMENSIONS

by Ati Gropius Johansen



Friday, March 30
9am-noon, 1:30 –4:00pm (Adults and Juniors)

Society Member \$120
Non-Member \$150

Minimum 6 Maximum 15

Join Ati Gropius Johansen, daughter of Bauhaus founder Walter Gropius, for a playful, discovery-laden approach to creating new understanding about form. In this workshop based on the Bauhaus foundation course, you will make design discoveries as you created new shapes with wire mesh, and paper. A Materials list will be provided with registration.

Ati Gropius Johansen, daughter of Bauhaus founder Walter Gropius and graduate student of Josef Albers, has been and instructor and lecturer at art schools and museums for over twenty-five years. Her workshops, based on the Bauhaus Foundation Course and the color pedagogy of Albers, have received praise and acclaim by art students and faculty across the country and internationally. In addition to being on the faculty of the De Cordova Museum in Lincoln, MA, she has taught courses and given lectures at the Museum of Modern Art in New York City, the Sante Fe Art Institute in New Mexico, the Boston Architectural Center, Simmons College in Boston, Historic New England in Boston, the Worcester Art Museum, Bridgewater State College, SUNC Cutchess, and the Walter Gropius Schule in Erfurt, Germany. Her earlier career as a children's book illustrator and graphic designer included illustrations for some forty-six books, and Art Directors Award, and numerous exhibition designs. She currently resides in Wellfleet, Cape Cod, Massachusetts.

PAINTERS CLASSES



PAINTINGS THAT GLOW WATERCOLOR PAINTING

by Paul George

Mondays 12:30 - 3:00pm (All Levels)
May 14—June 18
No Class May 28

5 Sessions	Painters Guild Member	\$140
	Society Member	\$155
	Non-Member	\$195

Award winning artist Paul George's classes are loaded with great information and are motivating for both the beginner and the experienced painter. You will paint your photos or still life but he will teach you how to approach any subject and design and execute a good painting that glows with light and color. You'll begin with a complete look at values and how to use them to simplify, design and improve your painting. Paul believes that design-composition is the most important part of any painting. You will learn how to use it to add power and punch that make your paintings come alive. He will support each subject with talks, painting demonstrations and with personal one on one support. Each class will end with complete critique.

*New England artist Paul George was born in Cambridge, MA. He has a BS from Northeastern University. He studied at the MFA school in Boston and also with National renowned Artists and authors Charles Reid, and Robert Wade. Paul is a signature member of the National Watercolor Society and a member of the Cape Cod, North Shore, Academic Artists, New England and Rhode Island Watercolor Societies and former Vice President of the Rockport Art Association. His work can be seen at the **George Gallery**, located in beautiful Gloucester, Massachusetts.*

"He is one of those rare individuals that not only a good painter but a committed and creative teacher as well." - International Magazine 2007

WEBSITE: WWW.PGEORGE.COM Email: PG77@mac.com



OIL PAINTING

by Paul George

Mondays 9:30am-Noon (All Levels)
May 14—June 18
No Class May 28

5 Sessions	Painters Guild Member	\$140
	Society Member	\$155
	Non-Member	\$195

This is a great class for the beginner or intermediate student or to just review oil painting methods and procedures. Paul will cover the basics of painting in oils including understanding materials, mixing clean color notes, color, values and composition and design. He will support his teaching with demonstrations, one on one instruction and critiques. You will work from Still Life and Photos. An opportunity to build a strong foundation in painting.



PASTELS

by Dianne Levine

Tuesdays 1:00-3:30pm (All Levels)
April 3- May 29

9 Sessions	Painters Guild Member	\$182
	Society Member	\$197
	Non-Member	\$237

Have a great time with soft pastels. It is a medium which does not have to dry and is ready for use when you wish. Colors are as soft or as brilliant as you want to use. Individual projects will be emphasized.

Dianne is a member of the faculty of LACS and has had 45 years experience teaching art. Her work has been seen in the Tokyo Museum of Art and presently in Art 3 Gallery in Manchester NH. Her work was included in the Maryland Pastel Society and the Pastel Painters of Maine national shows. She is also a Distinguished Artist member of the Concord Art Association, a member of the New Hampshire Pastel Society, and Pastel Painters of Maine. To view her work, visit her website at www.dlevineartist.com.

PAINTERS CLASSES



ACRYLIC PAINTING

by Maris Platais, ASMA/AAA

Tuesdays 9:30am-Noon Interm. - Advanced)
April 3—May 29

9 Sessions	Painters Guild Member	\$236
	Society Member	\$251
	Non-Member	\$291

Experience the magic of this fast-drying medium with emphasis on color-mixing, paint-handling and composition. Creative approach to subjects of your choice, using imagination and reference materials.

Maris has taught drawing at MFA for 15 years. He is a member of Guild of Boston Artists, Academic Artists Association, Concord Art, Lexington Painters Guild, American Society of Marine Artists. Drawings appeared in Yankee Magazine covers and centerspreads.



ACRYLIC AND OIL PAINTING

"A Bigger Brush, a Looser Line!"

By Emily Passman

Wednesdays 9:30am-Noon (All Levels)
April 4—May 30

9 Sessions	Painters Guild Member	\$182
	Society Member	\$197
	Non-Member	\$237

Ready to get back to painting? Need a refresher or starting new? Want to loosen up? Even if you're a daily painter, come to this class for a still life study, color and brushwork techniques, and to work on your drawing skills! Emily's specialty is to teach you how to observe and paint what you see. There will be emphasis on sketching as a tool to truly see in a way which may feel quite new! We will also cover methods of using photographs to create paintings. You may work in either acrylic or oil as we will cover techniques of both.

Materials list will be provided to registrants upon request.

Emily worked as a graphic designer for years before devoting herself to painting and teaching full time. She has a Master's Degree in Education from Boston University and is a member of the Depot Square Artists.



WATERCOLOR PAINTING

by D'Ann Brownrigg

Wednesdays 1:00-3:30pm (All Levels)
April 4— May 30

9 Sessions	Painters Guild Member	\$182
	Society Member	\$197
	Non-Member	\$237

Learn to relax and focus on enjoying the joining of water and paint on paper to produce colorful, lively, transparent paintings. Paint a subject that interests you in a way that reflects your own personality. Still lifes and reference photos are available or bring your own reference material. We discuss basic techniques and design strategies and usually start each class with a short demo.

D'Ann is an award-winning member of the Lexington Arts & Crafts Society and a Distinguished Artist at Concord Art Association. She is an artist member of the North Shore Arts Association and won their

2009 Charlotte and Alfred Movali award for excellence in any medium.

View D'Ann's paintings at her website: www.BrownriggGallery.com

PAINTERS CLASSES



WATERCOLOR PAINTING

by Andrew Kusmin, NWS

- 1) Thursdays 9:30am-Noon
- 2) Thursdays 12:30-3:00pm

8 Sessions April 5—June 7
No Class May 10

8 Sessions	Painters Guild Member	\$236
	Society Member	\$251
	Non-Member	\$291

Take your painting to a new level and enhance your personal signature. With instructional critiques, individual attention, emphasis on composition and light, Andrew will reinforce what you already do well and help you build on your talent enabling you to create “paintings with a presence”.

Andrew has received numerous local and national awards. He is a signature member of the National Watercolor Society, Audubon Artists, Allied Artists of America, Southwest Watercolor Society and several others. He has a new studio and workshop space located in Plymouth, Massachusetts. Andrew served four years as President of the New England Watercolor Society.

MIXED MEDIA CLASS FOR GRADES 4—6



CALLING ALL ARCHITECTS:

MAKE A NEIGHBORHOOD DURING SPRING BREAK!

FOR GRADES 4-6

School Vacation Week - 4 Sessions

Tuesday-Friday, April 17-20, 1:30-3:30pm

Class Fee: \$80

In this class you will look at pictures of buildings, then design and construct your own from cardboard, paper, glue and paint.

Find out how to make things fit together and construct them for stability and appearance!

Class limited to 8

Mrs. Andersen has taught art making to kids for more than 22 years. To see more about her teaching, go to ArtWaysAndMeans.com, or to see her paintings, see Loisdandersenfineart.com.

PAINTERS OPEN STUDIO (For Members Only)

MEMBERS' MONDAY NITE - FIGURE DRAWING GROUP

Mondays 6:30-9:00pm
March 26—June 11

8 Sessions \$100*

* (includes professional model/administrative fees)

**For information about this group and
joining the Society,
please call the Office 781-862-9696.**



MEMBERS' FRIDAY MORNING - PORTRAIT GROUP (Coordinated by Sara Sue Pennell)

Open portrait studio. Group shares cost of model.

Fridays 9:30am-12:30pm

March 30 - June 1
No Session May 11 or May 18

8 Sessions
**For information about this group, please contact
Sara Sue Pennell at 781-862-8180.**

**For information about joining the Society,
please call the Office 781-862-9696.**

Friday Nite Out Studio

(Coordinated by Cathy Keller)

Fridays 6:30-9:00pm
March 30—June 1
No Session May 11 or May 18

8 Sessions

(No instruction. May be costs associated with bringing in professional demonstrators during this period - to be determined by the group.)

**For information about this group and
joining the Society,
please call the Office at 781-862-9696.**

WOODWORKERS CLASS



BIRD CARVING

by Jane Layton

Wednesdays 9:30am-Noon (Beginners welcome)

March 28– May 30

10 Sessions	Member	\$140
	Non-Member	\$180

New Students: Please add \$15.00 for materials

From a basswood cut-out, participants will create a small songbird by carving with hand tools and painting with acrylics.

Award winning bird carver Jane Layton has been teaching carving for over twenty years.

Any questions, contact: Jane Layton at 781-259-9036.

BEGINNING PROJECTS IN WOODWORKING

by Dave Eaton

Age 18 and Older (Beginner to Intermediate)

Fridays 6:00-9:00pm	April 13—May 18
6 classes	Society Member \$290
	Non-Member \$330

Includes materials fee of \$90

6 Student Maximum



This is an “**introduction to woodworking**” class where the participant(s) can expect to make a few simple to build projects using standard woodworking hand and power tools as they build a basic woodworking skill set. **Projects may include:** Cutting Board, Salad Tongs, Picture Frames, Kitchen Stool, Simple Bandsaw Jewelry Box or others.

Each student will be taught in safety, tool and machine use, wood characteristics and primary finishing techniques while under the close guidance and supervision of the instructor. Initial work will be accomplished by use of hand-tools and then, when the student is comfortable and proficient enough, with a machine(s) or power tool as appropriate but only if they so desire. The goal of the class is to have fun making some simple projects that you will be able to make on your own when class is over!

Dave lives in Natick, MA and has been a woodworker since his early years in his father's shop. He is an avid woodworker and enjoys teaching. He enjoys the flexibility wood permits while he essentially works to unveil that unique and natural beauty buried away inside. Every piece can be shaped into a one-of-a-kind item worthy of the beautiful tree it came from. Dave acquired his skills through the guidance of many woodworking professionals and presently offers his work in area galleries. He is active in the woodworking community and recognized as one of the top woodturning authorities in the area. He performs local demonstrations and is the instructor of the Woodturning Program at the Worcester Center for Crafts also offering courses in various types of woodworking at locations such as the Lexington Arts and Crafts Society.

Dave is a 10 year member of the LACS Woodworkers Guild and is the Society's Webmaster. He is an Officer and Past President of both the Central New England Woodturners and Association of Revolutionary Turners as well as a member of The Guild of New Hampshire Woodworkers, Weston Arts & Crafts Association, American Association of Woodturners, Ocean Woodturners, New England Woodworkers Guild, New England Woodcarvers and New England Association of Woodworking Teachers.

ABOUT SOCIETY MEMBERSHIP

SOCIETY (ACTIVE) GUILD

Benefits:

- Make lasting friendships with other artists.
- Enhance your skills in classes and workshops. Members pay reduced tuition.
- Receive member discounts at museums and quality retailers.
- NARM (North American Reciprocal Museums membership).
- Use of well-equipped studios, specialized tools and equipment/guild meeting areas.
- Exhibit and sell your work in the spacious Parsons Gallery, Back Door Gallery, as well as other locations in the area.
- Increase exposure of your website with free link from LACS site.
- Receive Society and Guild newsletters (not all guilds) with information on our programs, shows and events.
- If you wish, receive e-mail bulletins about regional events of interest to our members.
- Invitation for member and a guest to attend the popular Holiday Marketplace Preview Party and advance sale.
- Ample free parking for Society events.

Responsibilities:

- Annual Society dues of \$150, plus Guild dues billed separately.
- The Society was founded by dedicated and hard working individuals and can be maintained only by this type of person...sharing duties and responsibilities equally. Applicants should realize that they must assist in these duties if the Society is to remain a viable organization.
- Attendance at Society/Guild orientation required.
- Contribute your talents to planning and staging Guild and LACS events. Share in committee responsibilities and offer your specific, unique skills for the benefit of us all.
- Expect to help staff the gallery during shows.
- Sell your work at the Fall Fair fundraiser. Proceeds go 100% to LACS. Minimum Fair commitment \$75 (Ceramics members \$100).

SOCIETY SUSTAINING

Benefits:

- Meet and interact with a community of people with common interests.
- Satisfaction of supporting the arts and crafts
- Pay reduced tuition for classes and workshops.
- Receive member discounts at museums and quality retailers.
- NARM (North American Reciprocal Museums membership).
- Receive Society newsletter with information on our programs, shows and events.
- If you wish, receive e-mail bulletins about regional events of interest to our members.
- Invitation for member and a guest to attend the popular Holiday Marketplace Preview Party and advance sale.
- Ample free parking during Society events.

Responsibilities:

- Annual Society dues of \$100.
- Attendance at Society orientation required.
- May be asked to gallery sit during exhibit.
- May be asked to volunteer for tasks such as hosting an event, setting up or taking down an exhibit, sitting the gallery, etc.
- Share in committee responsibilities and offer your specific, unique skills for the benefit of us all.
- Generally support the Society.

JUNIOR MEMBERSHIP (Ages 13-18)

ANNUAL MEMBERSHIP FEE: \$35

Lexington Arts & Crafts Society established Junior Membership for the purpose of offering classes and workshops of interest to younger members.

Benefits of becoming a Junior Member:

- Eligible to participate in classes/workshops being offered to Junior Members.
- May have opportunity to exhibit your work if Junior Member or Student Show is planned or by invitation.
- Invited to attend the popular Holiday Marketplace Preview Party/Reception (for members only and one guest) held in December.
- Receive a Junior Membership Card.

REGISTRATION INSTRUCTIONS AND FORM

- PLEASE INCLUDE A SEPARATE CHECK FOR EACH CLASS OR WORKSHOP

INDICATE CLASS OR WORKSHOP ON THE CHECK

- ENCLOSE ALL PAYMENTS WITH COMPLETED REGISTRATION FORM BELOW

- CHECK(S) MADE PAYABLE TO: Lexington Arts & Crafts Society (LACS)

- MAIL REGISTRATION FORM along with check(s) to:

Education, Lexington Arts and Crafts Society

130 Waltham Street, Lexington, MA 02421

NOTE: IF THE CLASS YOU HAVE REGISTERED FOR IS FULL, YOUR NAME WILL BE PLACED ON A WAITING LIST, YOU WILL BE NOTIFIED AND YOUR PAYMENT(S) WILL BE RETURNED

PLEASE REGISTER PROMPTLY

LEXINGTON ARTS & CRAFTS SOCIETY, 130 Waltham Street, Lexington, MA 02421

ENCLOSE PAYMENT(S) WITH REGISTRATION:

- SEPARATE CHECK FOR EACH CLASS, PAYABLE TO LACS
- PLEASE WRITE CLASS OR WORKSHOP TITLE ON CHECK

INDICATE: Guild Member Society Member Junior Member Non-Member

e-mail address : _____

Name: _____ Telephone: (day) (____) (eve) (____)

Street: _____ City: _____ State: _____ Zip: _____

Note: NARM Members pay Society member rates.

Class/Workshop Title: _____ Instructor: _____

Day(s): _____ Time: _____ Class Fee*: _____ Late Registration Fee: _____

* Teachers interested in PDP's Add: \$10.00

Class/Workshop Title: _____ Instructor: _____

Day(s): _____ Time: _____ Class Fee*: _____ Late Registration Fee: _____

* Teachers interested in PDP's Add: \$10.00